

INSTRUCTIONS

SP189 4G/15L SPRAYER

Congratulations on the purchase of the Vesperis Sprayer. These sprayers allow the easiest and most comfortable way for all spraying projects. These units have been skillfully engineered to all but eliminate the problems inherent in most sprayers. It is strongly recommended that you carefully read and follow all the information on this sheet before using, and then save for future reference.

Included in the box, please find the following:

- 1) PUMP HANDLE & PUMP LEVER.
- 2) SPRAYER (Pump Module installed).
- 3) SPARE PARTS (bag with locking rings & washer).

PUMP HANDLE: The pump handle is made of a tubular steel with a plastic grip on one end, and a round tube welded to the opposite side at right angle. The flat bar has a hole $\frac{7}{16}$ " in diameter. This hole is located $2 \frac{1}{4}$ " from the round tube. (See figure 1).

PUMP LEVER The pump lever is made of a $\frac{7}{16}$ " solid round steel bar with two bends, one on either side of the bar. (See figure 1).

PUMP MODULE Pump module is installed in the sprayer. Now proceed to install pump handle and lever.

ASSEMBLY OF PUMP HANDLE PUMP LEVER & PUMP MODULE

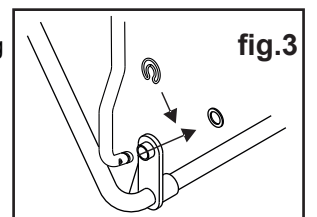
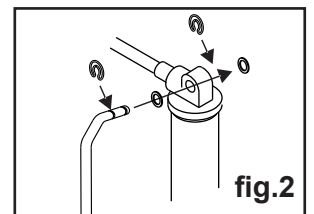
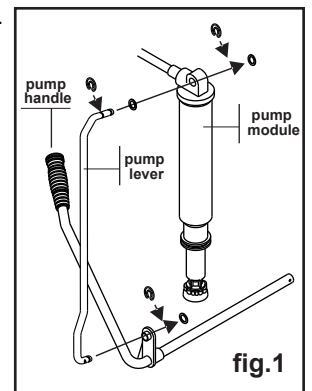
Pull sprayer, pump lever, pump handle, spray wand, plastic bag (with washers and pins), etc. out of box. Place parts in front of you. Take the pump lever, there are bends on either side. (See figure 2). Place one washers through the bar, then push lever through opening on pump, place washer on pump lever and then place the two lock rings on the grooves.

On the same side where the pump is located, place the round portion of the pump handle through the hole on the base of the sprayer. When it is almost through, place the bent portion of the pump lever through the hole on the flat portion of the handle. Once through, place on one washer and then the lock ring. (See figure 3). The round tube comes through the base of the unit and extends out $\frac{1}{4}$ ", exposing the hole drilled through the tube. Place on the other washer and the lock ring. The pump handle assembly is now complete.

STRAPS Hook the plastic clip attached to the shoulder straps into the appropriate lateral opening on the base of unit.

SPRAY WAND AND NOZZLE

Attach spray wand to spray gun and firmly tighten. To adjust nozzle, tighten (turn clockwise), cap for a fine atomized spray, or loosen (turn counter-clockwise), for a coarser spray or solid stream.



THE SPRAYER IS NOW READY TO USE

HOW TO PREPARE YOUR UNIT FOR USE:

- 1.- Always oil the seal inside the cap of unit before using, as well as the check valve. This will extend life of seal, and it is important for obtaining a leakproof barrier.

2. A unit that has been used with herbicides should never be used to spray insecticides, unless the sprayer has been properly cleaned and all other chemicals neutralized. Failure to do this could cause you to kill plants sprayed. Consult with the manufacturer of the chemicals in use for proper instructions.
3. Remove cap.
4. Mix solution in a separate receptacle, following manufacturer's directions on the container.
5. Pour pre-mixed solution into sprayer and fasten cap securely.
6. Place sprayer on back and pressurize by pumping approximately 5 to 11 times.
7. Normal working pressure should be from 25 psi to 40 psi. Too much pressure will waste chemical and over apply, as well as causing potential damage to pump tube.
8. Pump occasionally to maintain the desired spraying pressure.

HOW TO CLEAN AN MAINTAIN:

1. Remove cap and pour out any remaining spray solution. Rinse all parts thoroughly with clean water.
2. Leaving approximately one gallon of fresh water in the tank, pressurize and flush pumping system by depressing trigger for at least 2 minutes. Then drain all remaining water from tank, and repeat this process two times. To properly neutralize chemicals, a neutralizing solution mentioned in the "Trouble-Shooting" guide should be used.
3. Always store tank clean and empty in a dry shaded location.

CAUTIONS

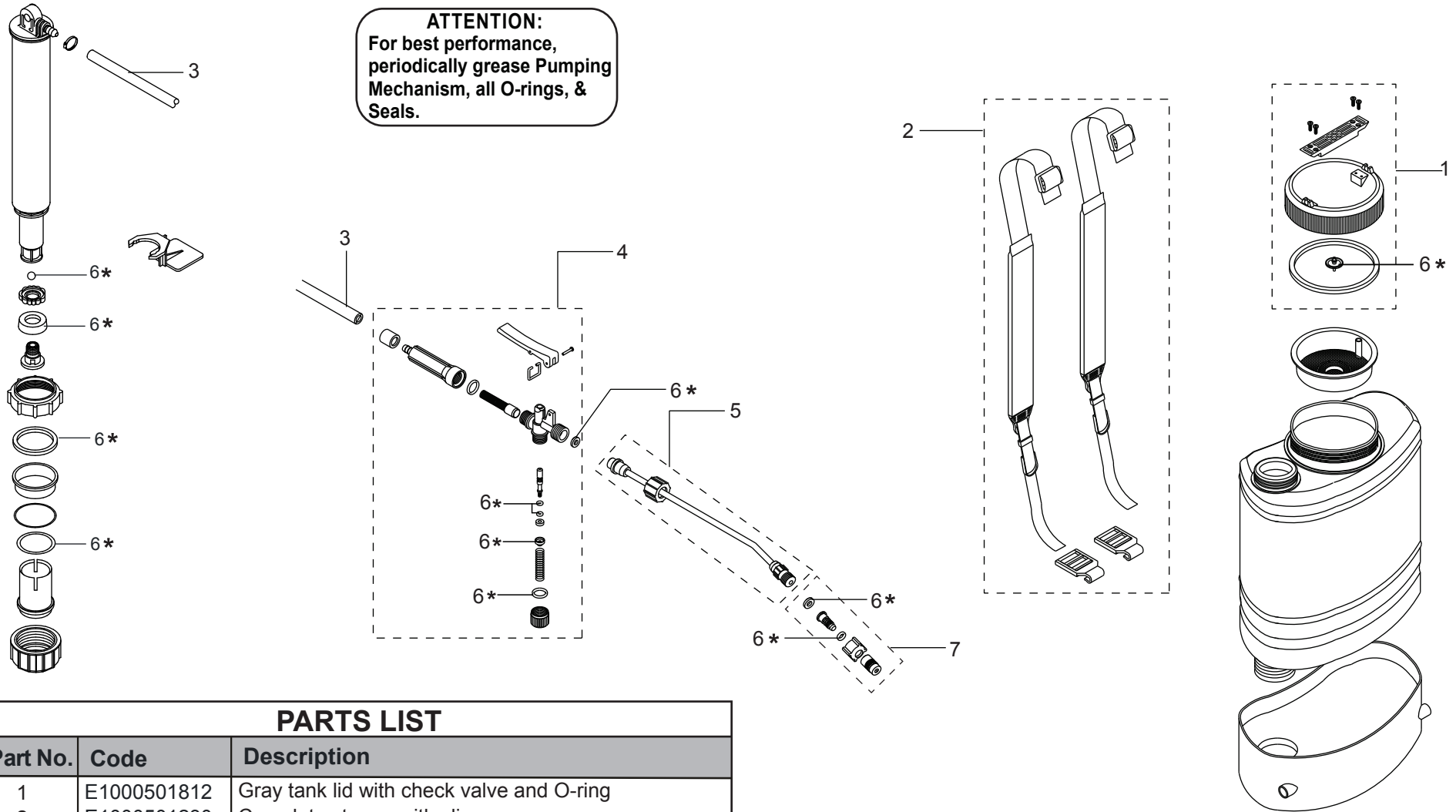
Failure to follow manufacturers recommendation on use and care of unit will void any expressed or implied warranty.

Please read and follow all instructions before using sprayer.

- Before using, filling or cleaning any sprayer, read all parts of the operating instructions.
- Make sure to set up the sprayer exactly as explained in the printed operating instructions, reminder tags and/or stickers.
- Wear protective clothing, respirator, gloves, eye protection, etc. whenever using, filling, or cleaning sprayer.
- Periodically re-grease lid gasket as well as lid vent and pump cylinder, where applicable.
- To ensure good performance, keep lid vent free of obstruction. Before and after each use, make sure all connections are well tightened. Service and replace worn parts as required.
- Read and follow all instructions of the chemical suppliers.
- As a rule, mix your chemicals in a separate container from which to fill the sprayer. Do not mix formulas inside the sprayer. Where an exception is made (e.g. with liquid fertilizers), fill sprayer with water BEFORE adding the active ingredient.
- Always sift formula through the screen. If there is no built-in strainer, use a screened funnel.
- Never fill the sprayer with hot liquids. Max. 30°C, or 85°F.
- This sprayer is made to handle agrichemicals in their usual water or oil solutions. Do not use flammable, corrosive or caustic solutions.
- Never use gasoline or other flammable materials.
- Before cleaning or servicing the sprayer, allow all pressure to escape. Do not store or transport sprayer under pressure.
- After each use, wash the sprayer—including hose, lance and shut-off valve—with plenty of fresh water. Unless spraying is to be continued within hours, drain chemical formula and thoroughly rinse the tank and all liquid ducts.
- Never store chemicals in your sprayer for any length of time.
- Use the sprayer only for the kind of jobs for which it was designed. When in doubt, ask your dealer.
- Do not leave the sprayer in reach of children or persons not qualified to handle it in proper fashion.
- When not in use—and especially during prolonged storage—keep your sprayer in a protected place away from direct solar heat.
- Make sure the spray hose loops freely without kinking or squeezing.
- Always use original replacement parts.

Parts Kits for the SP189 4G/15 L Sprayer

ATTENTION:
For best performance,
periodically grease Pumping
Mechanism, all O-rings, &
Seals.



PARTS LIST

Part No.	Code	Description
1	E1000501812	Gray tank lid with check valve and O-ring
2	E1000501230	Complete straps, with clips
3	E1000803683	Hose with 2 clamps
4	E1000807082	Complete spray gun with seals
5	E1000803085	20" brass wand with nut
6 *	E1000189202	Complete set of O-rings for entire sprayer
7	E1000803592	Adjustable brass nozzle with seals

NOTE: Code E1000803592 does not include the check valve. The check valve is sold separately as E2888219011.

