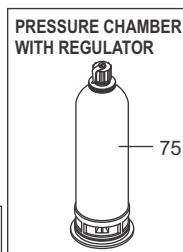
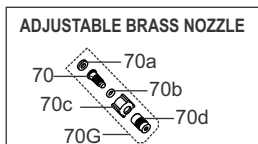
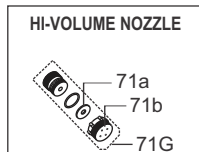
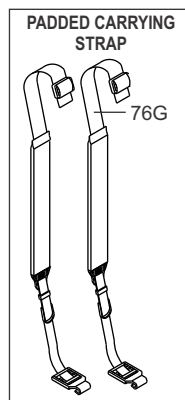
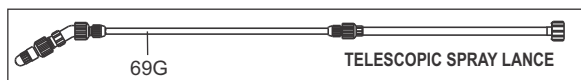
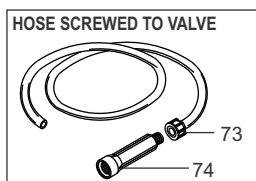
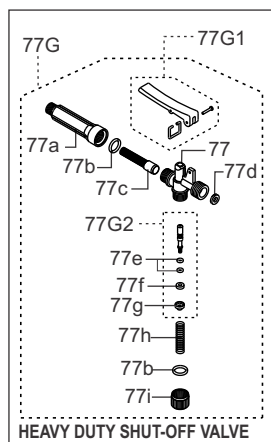


FACTORY-INSTALLED UPGRADE OPTIONS

Part	Code	Description	Part	Code	Description
69G	E219-236-C	Telescopic spray lance ass'y	76G	E501-230-C	Padded carrying strap ass'y
70	E803-092	Nozzle body	77	E807-073	Valve body
70a	E803-114	Gasket - N	77a	E807-175	Filter housing
70b	E803-083	O'ring	77b	E803-060	O'ring
70c	E803-090	Nozzle nut (2pcs)	77c	E807-074	Filter insert
70d	E803-087	Nozzle cap	77d	E803-114	Gasket - N
70G	E803-092-C	Nozzle body ass'y	77e	E803-068	O'ring - V (2pcs)
71a	E219-134	Hi-volume nozzle gasket	77f	E803-061	Pin gasket - V
71b	E219-133	Hi- volume nozzle cap	77g	E803-065	Metal support
71G	E219-610-C	Hi- volume nozzle 11/16" thread aluminum	77h	E803-067	Plunger spring
			77i	E803-064	Cap
73	E807-281-C	Hose screwed on to valve	77G	E807-175-C	Heavy duty shut-off valve ass'y
74	E807-175	Threaded filter housing	77G1	E803-072-C	Valve lever ass'y
75	E219-015-C1	Pressure chamber with regulator	77G2	E803-061-C	Plunger ass'y



NOTE:

-- For practical time-saving accessories, special nozzle tips etc., please refer to spec sheet "OPTIONAL SWISSMEX-RAPID ACCESSORIES".

In the interest of continued technologic progress specifications are subject to change without notice

SWISSMEX-RAPID, S.A. DE C.V.

Calle Swissmex No. 500 Fax (474) 742 0856,
Col. Las Ceibas, 742 4185
47440 Lagos de Moreno ☎ (474) 741 2200,
Jalisco, México 741 2201

www.swissmex.com
exports@swissmex.com.mx

Operating hints Agricultural Knapsack Sprayer model 503

Dear Customer:

You have purchased one of the best knapsack sprayers on the market today. For the best performance of your sprayer and for your own security please read and observe the following information:

FOR YOUR SAFETY AND COMFORT:

1. Before using , filling or cleaning any sprayer, read all parts of this sheet.
2. Read and follow all instructions of chemical suppliers.
3. Wear protective clothing, respirator, gloves, eye protection, etc., when using, filling or cleaning the sprayer.
4. Keep connections well tightened to prevent leaks.
5. Never fill the sprayer with hot liquids. Max 30 C = 86 F.
6. Do not use your sprayer to apply caustic, corrosive or flammable solutions.
7. Before cleaning or servicing the sprayer allow all pressure to escape. Always wash the sprayer after each use with plenty fresh water.
8. Do not leave any sprayer in reach of children or persons not qualified to use it in correct fashion.

HOW TO ASSEMBLE

1. Introduce the handle (54G) in the pump lever hinge (58G), place the washer (57) and fix it with "R" pins (56).
2. Attach the spray lance (44G) to the shut-off valve (32G). Tighten securely by hand.

HOW TO PREPARE YOUR UNIT FOR USE

1. Remove cap.
2. Use always the strainer when filling the tank up with liquid.
3. Mix solution in a separate receptacle, following manufacturer's directions on the container.
4. Pour pre-mixed solution into sprayer and cap.
5. Place the sprayer on back and pressurize tank by pumping up to 25 times.
6. You will need to pump once each 3 or 4 seconds to maintain the desired spraying pressure.
7. Always oil the seal on cap of unit as well as the check valve, this will extend life of seal and is important for obtaining a proper seal for no leaks.
8. A unit that has been used with herbicides should never be used to spray insecticides, unless the sprayer has been properly cleaned and all the chemicals neutralized. Failure to do this could cause you to kill plants that have been sprayed. Consult the manufacturer of the chemicals in use to obtain proper instructions.

HOW TO CLEAN AND MAINTAIN

1. Allow pressure to escape. Remove cap and pour out remaining solution, then rinse all parts thoroughly with clean water.
2. Leaving approximately ½ gallon of fresh water in tank, pressurize and flush pumping system by depressing trigger at least 2 minutes, then drain all remaining water.
3. Carrying straps will not absorb chemicals. In the event of a formula spill, however, tank and straps should be properly cleaned with water to eliminate all possible risk of skin irritation.
4. Always store tank clean and empty in a dry, shaded location.

HOW TO SERVICE THE PUMPING SYSTEM

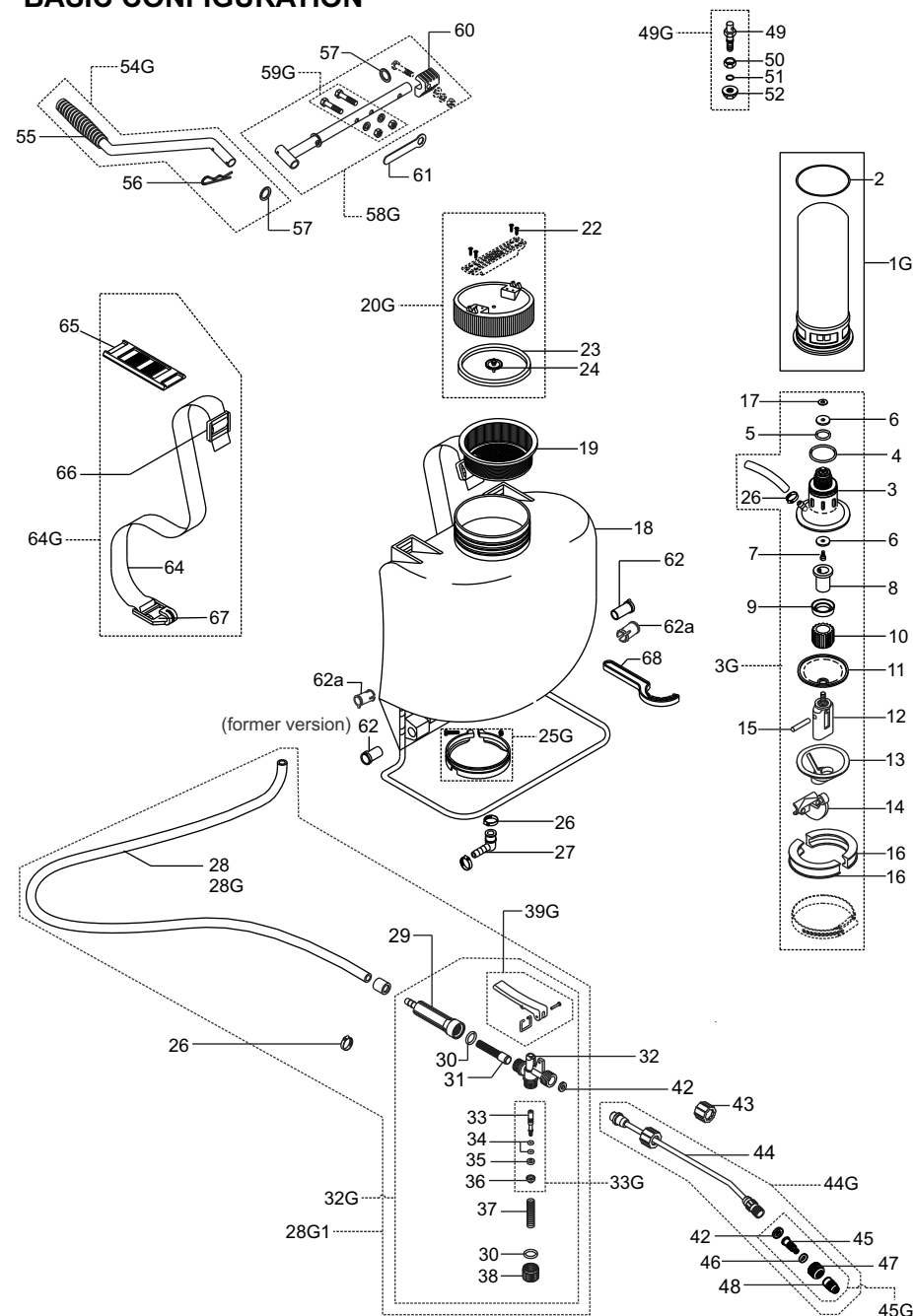
1. Remove the locking pin at the end of the pump handle and the nuts and screws that secure the pump lever.
2. Remove the module from the unit.
3. To inspect or change the valve plates or the piston sleeve, just unscrew the module, change the valve plates and/or the piston sleeve if necessary and place the module again making sure that its exterior notch aligns with the groove of the chamber. This way the module little windows will match with the chamber outlet.
4. Place again the pump lever with piston and the locking pin.

COMMON PROBLEMS AND POSSIBLE CORRECTIONS		
PROBLEM	CAUSE	SOLUTION
The pump handle is hard to move	The wall of the module are dirty The piston sleeve is dirty or worn out.	To clean or change the piston sleeve.
The tank collapses	The breather check is blocked up.	To clean the breather check of the lid.
The lid leaks	The lid do not seal correctly.	Oil the lid gasket.
The module leaks	Diaphragm is broken	Change the diaphragm.
Lack of pressure	Valve plates dirty or clogged.	Clean or change the valve plates.
The pump handle goes upwards	Valve plate inside the module es broken or clogged.	Clean or change the valve plate.
Pressure doesn't last	Insufficient air chamber.	Pour all the liquid from the tank and from the pressure chamber. NOTE: to prevent this always let the pressure using scape after the sprayer.

BASIC CONFIGURATION

Part	Code	Description	Part	Code	Description
1G	E501-019-C	Pressure chamber ass'y	34	E803-068	O'ring - V (2pcs)
2	E501-021	O'ring	35	E803-063	Pin gasket - N
3	E503-012	Upper module	36	E803-065	Metal support
3G	E503-013-C	Pump module ass'y	37	E803-067	Plunger spring
4	E501-027	O'ring	38	E803-164	Cap
5	E501-023	O'ring	39G	E803-072-C	Pump lever ass'y
6	E501-401	Valve plate - V (2 pcs)	42	E803-114	Gasket - N
7	E501-055	Valve screw	43	E803-059	Nut
8	E503-013	Inner piston	44	E803-085	Spray lance
9	E503-028	Piston - V	44G	E803-285-C	Spray lance ass'y
10	E503-024	Grooved piston	45	E803-262	Nozzle body
11	E503-032	Diaphragm	45G	E803-262-C	Nozzle body ass'y
12	E503-039	Connecting rod	46	E803-083	O'ring
13	E503-041	Lower module	47	E219-211	Nozzle nut
14	E503-042	Pump lever	48	E803-263	Nozzle cap
15	E503-040	Plastic pin	49	E503-067	Agitator nipple
16	E503-143	1/2" clamp	49G	E503-067-C	Plastic nipple ass'y
18	E503-005	Tank	50	E503-077	Bushing
17	E501-390	Washer	51	E503-069	O'ring for agitator nipple
19	E501-004	Strainer	52	E503-068	Nut for agitator nipple
20G	E501-001-C	Tank lid ass'y	54G	E476-053-C	Swingback pump handle
22	E501-144	Lid screw	55	E501-015	Handle grip
23	E501-002	Lid gasket	56	E501-050	"R" locking pin 1/8"
24	E501-020	Breather check	57	E501-010	Washer
25G	E476-008-C	Plastic clamp ass'y	58G	E501-217-C	Horizontal pump shaft
26	E501-082	SX 9-18 clamp	59G	E501-045-C	Screw ass'y (2 pcs)
27	E502-191	Connector	60	E501-141	Plastic locking pin
28	E803-081	Hose 3/8"	61	E501-138	1/2" wrench
28G	E803-081-C	Hose w/fitting	62	E501-006	Pump shaft bushing (2 pcs former version)
28G1	E807-065-C1	Hose & valve body 807 3/8" ass'y	62a	E501-206	Pump shaft bushing (2 pcs)
29	E807-075	Filter housing 3/8"	64	E501-034	Carrying strap
30	E803-060	Washer	64G	E501-034-C	Carrying strap ass'y (2 pcs)
31	E807-074	Filter insert 807	65	E501-025	Shoulder pad
32	E807-173	Valve body 807	66	E501-035	Strap buckle
32G	E807-075-C	Valve body 807 3/8" ass'y	67	E189-036	Strap hook
33	E803-166	Plunger	68	E503-074	Wrench
33G	E803-067-C	Plunger ass'y			

BASIC CONFIGURATION



NOTE:

-- Please note that marked "=" have standard ORANGE color. Unless a parts order states otherwise they will be supplied in this standard color.