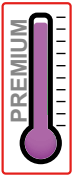


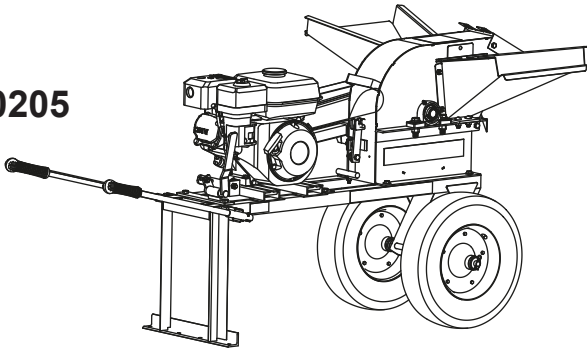
SWISSMEX®



OPERATOR'S MANUAL

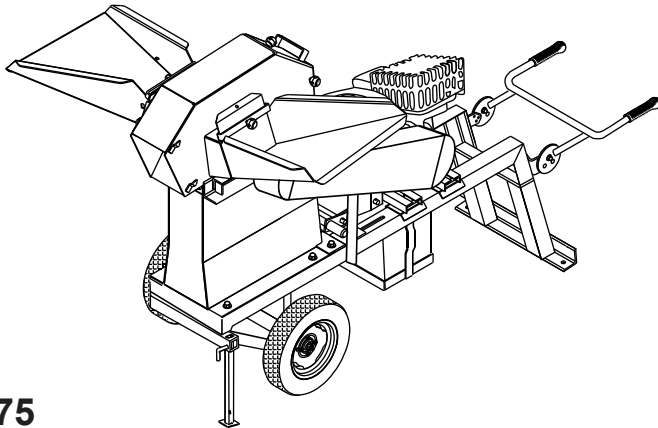
TURBO MILL FOR GREEN & DRY MATERIAL

610205



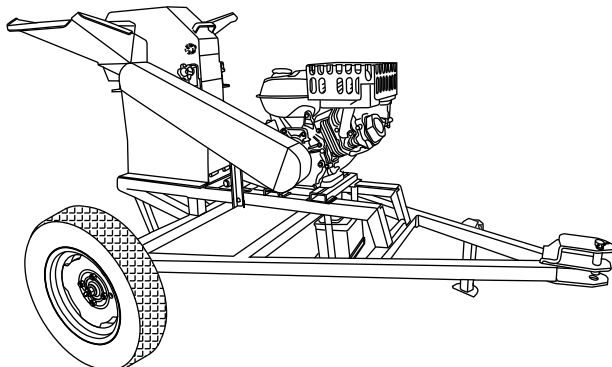
610355

610305 (sin motor)



610375

610385 (sin motor)



PARA EL PROFESIONAL QUE BUSCA GRAN RENDIMIENTO Y LARGA DURACIÓN.

Balanced

AGRICULTURAL MILL FOR GREEN & DRY MATERIAL

- With this practical mill you will be able to grind green and dry corn canes as well as corn grains "Produce the fodder for your cattle by yourself".

MODELS

**610205,
610355, 610305,
610375, 610385**

INDEX

1. Introduction	1	4.2 Starting procedure	
2. Safety information	1, 2	4.3 Fodder chopping	
2.1 Protection equipment		5. Maintenance	7, 8
2.2 Safety measures		5.1 Guide for daily maintenance	
3. General information	3, 4, 5	5.2 Major maintenance	
3.1 Identification plate		5.3 Maintenance schedule	
3.2 Main components		6. Trouble shooting	8
3.3 Technical data		7. Spare parts	9, 10
3.4 Assembly		8. Storage	10
4. Operation	5, 6	9. Warranty	11
4.1 What to do before starting up the equipment			

1. INTRODUCTION

Thank you for buying a Swissmex agricultural mill, we guarantee that the product you have purchased has unsurpassed quality since it was developed with state-of-the-art technology, following the required quality standards.

This equipment was carefully designed and manufactured to provide maximum performance, economy, and ease of operation. It is important that the operator knows all the information contained in this manual, read it before operating it, follow the recommendations step by step and have it on hand to consult it when necessary.



This manual contains important safety warnings: please read it carefully and be aware of any possible accidents. Keep all stickers on the equipment and replace them when necessary.

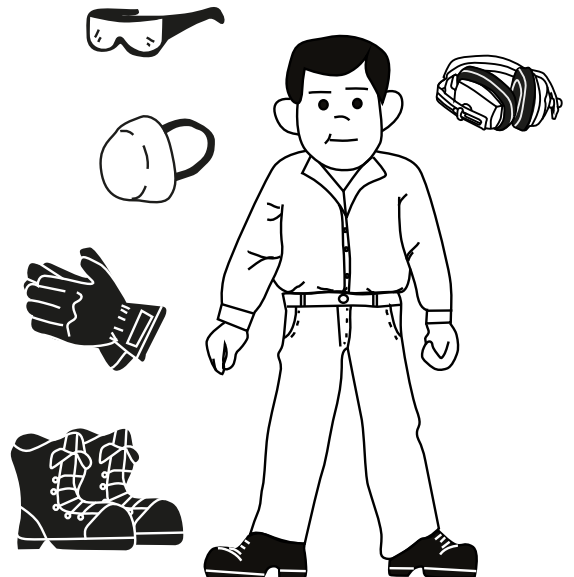
This mill is designed for you to grind fodder for your cattle, since you can grind stubble (dry corn stalk) or green corn stalk, as well as dry corn grain.

2. SAFETY INFORMATION

Below we will describe the most important points to review for the safety of you and third parties.

2.1 PROTECTIVE EQUIPMENT

- Protective gloves
- Safety glasses
- Close shoes
- Ear plugs
- Overalls / Work Clothes
- Mask



2.2 SAFETY MEASURES

Avoid accidents due to lack of knowledge and not following the safety rules described in this manual.

- Before putting your equipment into operation, read this instruction manual carefully. Incorrect handling by untrained persons can cause serious accidents.
- Do not make adaptations or improvisations; they compromise your equipment and put your security and that of third parties at risk. Any modifications or adaptations you make are at your own risk and this voids the warranty.
- Do not allow the presence of children, the elderly, people with special capacities or animals near the equipment during its use, maintenance, and even during storage.
- Always keep the equipment in perfect condition.
- When transporting your equipment, verify that the coupling to the vehicle that will tow it is correct. Do not exceed 25 km/h.
- If, due to the needs of your work with this equipment, you need to travel on federal or state highways, follow the road regulations. Keep hands, feet, and loose clothing away from moving parts.
- When disconnecting your equipment make sure it is done on flat and firm ground.
- Do not allow the operator of the equipment be under the influence of alcohol, drugs, or medication, it is very dangerous.
- Do not operate the equipment in an enclosed area for a long period of time as the engine generates carbon monoxide.



Engine exhaust gases contain carbon monoxide, which is harmful and can cause death.
Do not run the engine inside a building or an enclosed area.

Follow the instructions on the labels affixed to the equipment.

IMPORTANT!								
	610200	610300	610350	610370	610500	610510	610540	610550
Never add gasoline to the engine without the filter.	X		X	X	X		X	X
Never start the engine without checking the oil level.	X		X	X	X		X	X
Do not touch the exhaust protective cover and do not remove it.	X		X	X	X		X	X
Do not work in very windy conditions. Avoid material covering cooling slots.	X		X	X	X	X	X	X
Start the engine with the belts slack and never remove the protection.	X	X	X	X	X		X	X
Never run your engine tilted more than 15°, because the engine can break down	X		X	X	X		X	X
Do not exceed 540 RPM on the tractor PTO. Always keep the gearbox level and constantly check that the belts tension is correct.						X		
Always engage the PTO at low revs and go up gradually until 540 RPM is achieved.						X		
It is forbidden to put your hands beyond the feeding curtain.	X	X	X	X	X	X	X	X
Do not introduce materials not indicated in the user's manual and alternate the feeding in both ports to avoid overloading.	X	X	X	X	X	X	X	X
When grinding dry material, use the feed port on the opposite side from where the engine is placed.	X	X	X	X	X		X	X
Do not use the screens when grinding green material.	X	X	X	X	X	X	X	X
If you transport the equipment, make sure not to exceed 25 km/h. Always check the air level in the tires and lubricate the wheel hub periodically.	X	X	X	X	X	X	X	X
Grease the bearings at the end of each working day	X	X	X	X	X	X	X	X
Always use appropriate personal protective equipment. Avoid using loose clothing	X	X	X	X	X	X	X	X
Continuous operation of the equipment should not exceed 50 minutes with a 10 minute break.	X				X		X	X

PELIGRO

NO ACERQUE LAS MANOS A LA CORTINA DE ALIMENTACIÓN

DANGER

KEEP YOUR HANDS AWAY FROM THE FEEDING CURTAIN

SWETI0162-R02

3. GENERAL INFORMATION

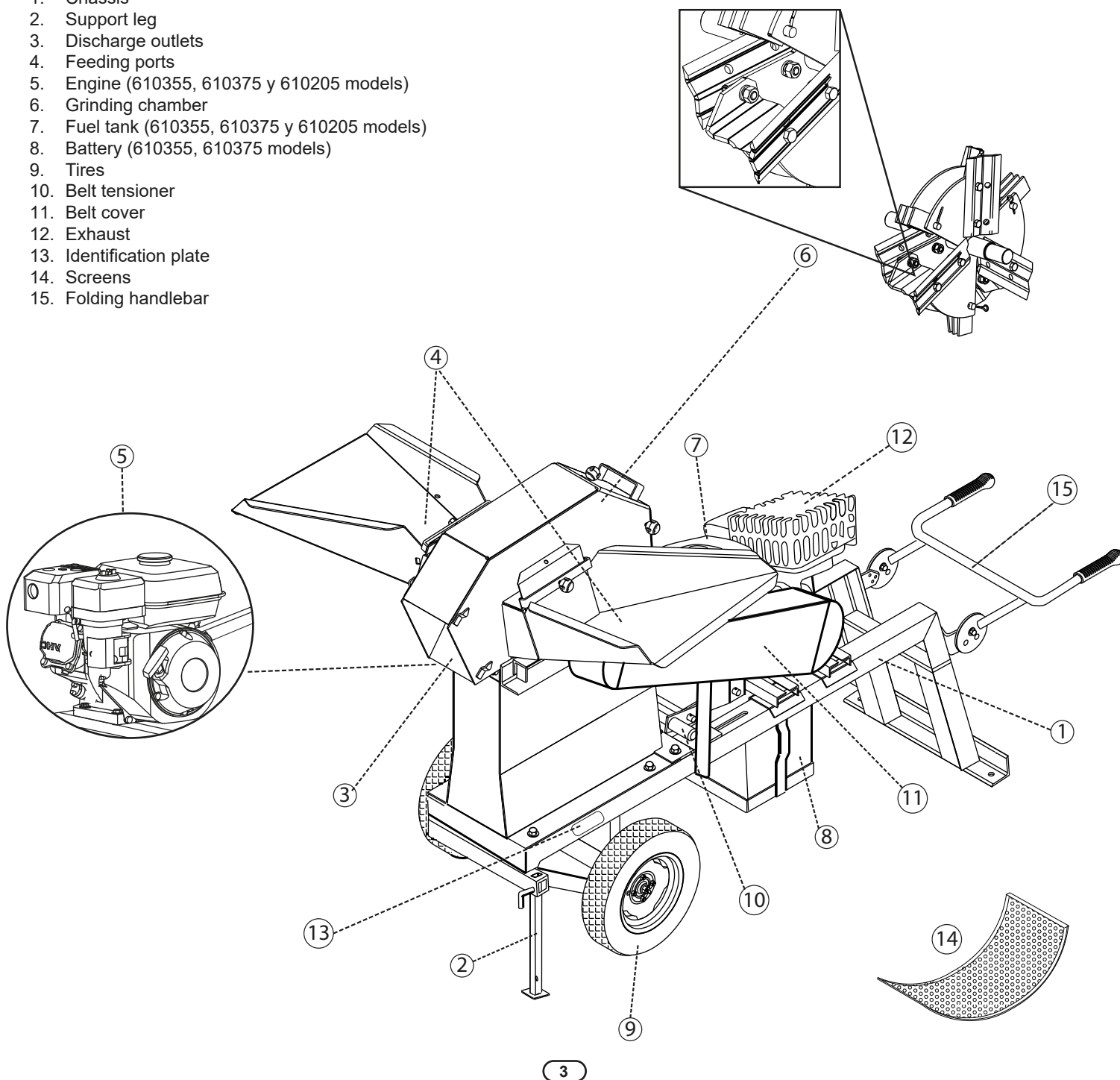
3.1 IDENTIFICATION PLATE

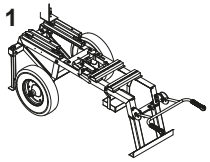
SWISSMEX®	
MODEL	
SERIAL No.	
SWISSMEX-RAPID S.A. DE C.V. Calle Swissmex No. 500 Col. Las Ceibas 47440 Lagos de Moreno Jalisco	

Your equipment has an identification plate where the model and serial number can be found. This information will be useful in case of processing a warranty or requiring spare parts. Write down the data of your equipment so you always have the information at hand.

3.2 MAIN COMPONENTS

1. Chassis
2. Support leg
3. Discharge outlets
4. Feeding ports
5. Engine (610355, 610375 y 610205 models)
6. Grinding chamber
7. Fuel tank (610355, 610375 y 610205 models)
8. Battery (610355, 610375 models)
9. Tires
10. Belt tensioner
11. Belt cover
12. Exhaust
13. Identification plate
14. Screens
15. Folding handlebar

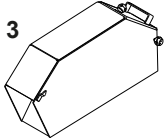




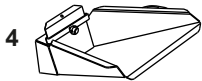
1. **CHASSIS:** made of structural iron coated with baked epoxy paint that protects it from corrosion.



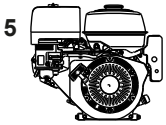
2. **SUPPORT LEG:** keeps equipment stability as a foothold.



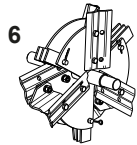
3. **DISCHARGE OUTLET:** allows the output of shredded fodder.



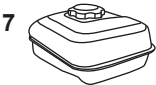
4. **FEEDING PORTS:** they are tilted so the material slides with the least operator's effort. Each port measures 115 X 180 mm with safety gate (for model 610200 it is 110 X 80 mm).



5. **ENGINE:** Gasoline, 4-stroke with electric starter, 13 HP, air-cooled Zip Star engine (Model 610200 has a 6.5 HP engine).



6. **GRINDING CHAMBER:** For chopping green and dry corn cane, it has a 6-blade rotor and 9 crushing hammers, as well as plates for extracting the material.



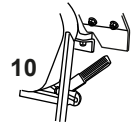
7. **FUEL TANK:** with 6.5 liters capacity (on model 610200 it is 3.6 liters).



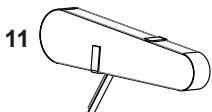
8. **BATTERY:** for the electric starter



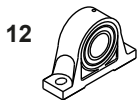
9. **TIRES:** for easy transport, type 165/70R13 (on model 610370 and 610380), 400X8-4 (on model 610300, 610350 and 610200).



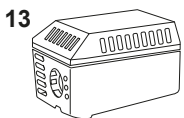
10. **BELT TENSIONER:** The belts are taut with the lever during work and loosened when resting or starting the engine.



11. **BELTS COVER:** protects the operator from accidents.



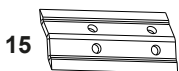
12. **ROWLOCK:** allows safe rotation of the rotor



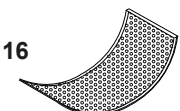
13. **EXHAUST:** expels the gases from the internal combustion of the engine, the gas outlet tube is placed in the opposite direction to the feeding port and grinding chamber in order to avoid accidents.



14. **BELTS:** long-lasting due to its yarn weft.



15. **BLADES:** made of special steel treated for high performance and with double life.



16. **SCREENS:** for dry fodder 1", 1/2", 1/4", for corn 1/8" (in model 610200 they are of 1/4" and 3/4").

3.3 TECHNICAL DATA

These models are versatile and can be easily transported by their hitch point.

SPECIFICATIONS		DESCRIPCIÓN				
MOLINO	Article	610205	610305	610355	610375	610385
	Chassis	Wheelbarrow	Wheelbarrow	Wheelbarrow	Pull Type Trailer	Pull Type Trailer
	Feeding	110 X 80 mm	Doble boca de 115 x 180 mm con puertas de seguridad			
	Output	180 X 100mm	130 X 195 mm			
	Transmission	Double belt A50	Double belt b65			
	Grinding capacity	880 kg/h approx. (green fodder) 380 kg/h approx. (dry fodder) and 380 Kg/h (grain)		2000 kg/h approx. (green fodder) 1000 kg/h approx. (dry fodder) **Not designed to shred tree branches**		
	Dimensions (mm)	845 x 1230 x 950	1100 x 1630 x 1000	1100 x 1630 x 1000	1550 x 2000 x 1100	1550 x 2000 x 1100
	Tires	400 X 8-4	400x8-4	400x8-4	165/70R13	165/70R13
	Weight	78.0 Kg. Aprox	120.0 Kg. Aprox.	152.0 Kg. Aprox.	163.0 Kg. Aprox.	131.0 Kg. Aprox
MOTOR	Model	FC170F	Not included	LZX188FE		Not included
	Displacement	208cc		389cc		
	Max. power	6.5 HP		13 HP a 3600RPM		
	Fuel tank	3.6 lts.		6.5 lts.		
	Start	Retcoil cord		Electric with recoil cord		
	Battery	N/A		12 VDC		

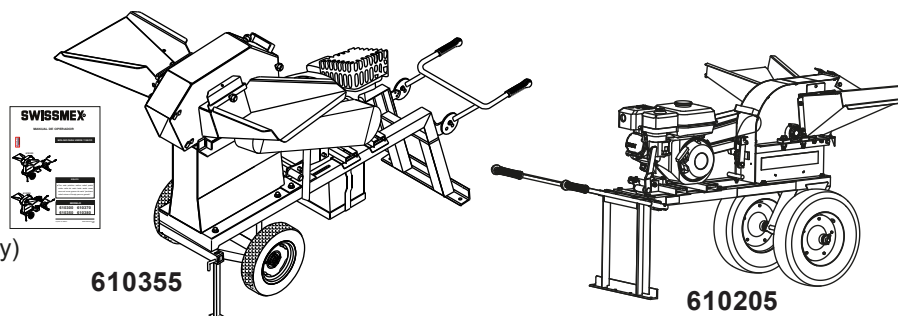
NOTE: Due to interest in technological progress, we reserve the right to make technical changes or modifications without prior notice.

3.4 ASSEMBLY

Please check that your equipment is complete. You should receive the following:

-Full equipment with:

- Engine (on models 610355, 610375 y 610205)
- Battery (on models 610355 y 610375)
- Chassis
- 2 belts B65, 2 belts A50 (on model 610205 only)
- 1 Pulley 4 screens 1/8, 1/4, 1/2 y 1"
- 1 screen of 3/4", 1 screen of 1/4" (on model 610205 only)
- Operator's manual



4. OPERATION

4.1 WHAT TO DO BEFORE STARTING YOUR EQUIPMENT



ATTENTION

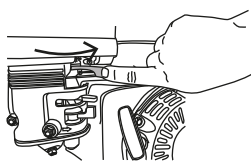
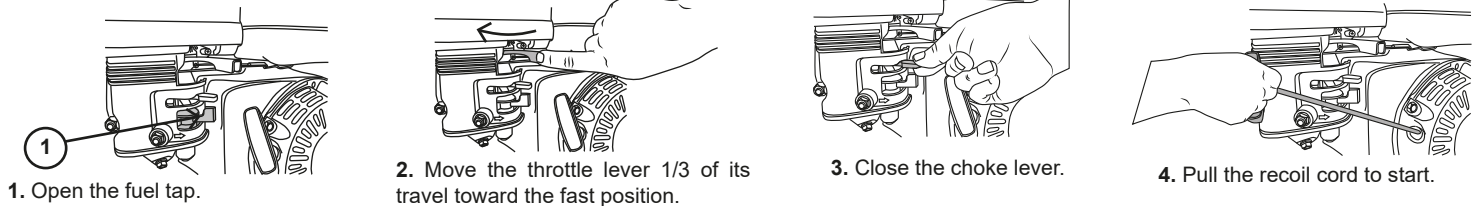
Before starting to work with the equipment, you must have it parked in a flat area free of obstacles. You must also have wedged the tires with some object.

- Before using the equipment, you must unhook and lower the support leg as well as chock the tires to prevent the equipment from moving.
- Visually check that all equipment parts are in place such as tight nuts and bolts.
- Check if your equipment has enough gasoline and the grease fittings are lubricated.
- Check that the tires have the correct air pressure at 28 to 32 PSI.
- Check that the support leg is in place and secure.
- Before starting the workday, first familiarize yourself with the parts of the equipment and the safety signals.
- Be extremely careful when handling gasoline.
- Never put gasoline in the engine when it is running.
- Check if the equipment is located on a level surface before use.
- Keep your hands and feet away of moving parts.

4.2 STARTING PROCEDURE

To get the engine to start, the belts must be slack, after starting the engine and revving it to the maximum and after 5 minutes you can tighten the belts by means of the lever, if your engine is internal combustion and tends to shut down at tensing the belts, just rev the engine.

- MANUALLY:



NOTE: Once the engine starts, quickly return the choke lever to its open position.

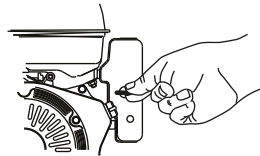


5. Move the throttle lever to full throttle.

NOTE: If the engine is warm, it is not necessary to do step 3.

- ELECTRICALLY:

Follow the steps above but replace step 4 with step 6.



6. Turn the ignition key and give full throttle.

*Be sure to return the key to its original position in the switch so you don't run down the battery.

ATTENCION: If you work the engine with low oil level, the engine may be damaged and it will not be covered by the warranty.

NOTE:

These steps are for an engine such as the SWISSMEX one. In case you have purchased equipment without an engine and have installed one yourself, be sure to follow the steps mentioned in the manufacturer's manual for that engine. Each model varies depending on their features.

4.3 FODDER CHOPPING

-Now you are ready to chop the fodder, for that you must introduce the corn stalks through the feeding port. If you are going to use the 2 feeding ports of the mill, it is recommended that you do it alternately, in this way you will not saturate the engine.

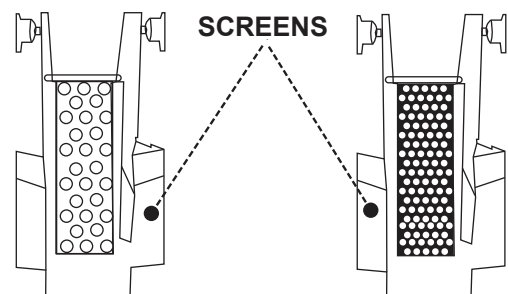
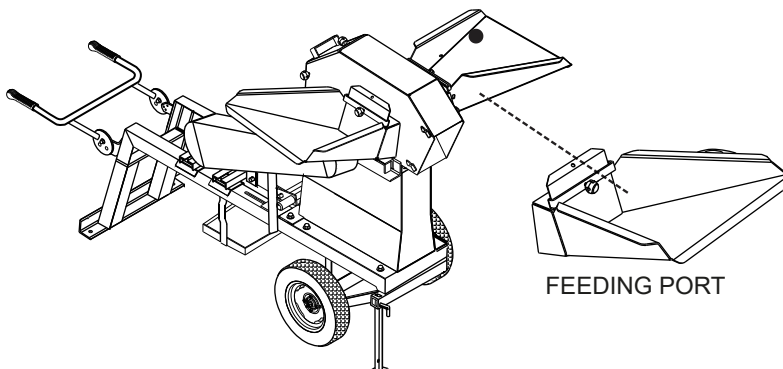
-You will notice that the mill practically sucks the material, it is not necessary to push it continuously.

-The 1" and 1/2" screens should be used when grinding stubble and the 1/8" and 1/4" screens should be used when grinding dry corn grain, and for model 610200 the 3/4" and 1/4" used to grind dry corn.

-Do not use any screen when you are going to grind green corn cane, it is not necessary since the screen would get clogged and cause problems.

In case you do not require the use of the two feeding ports, and you are going to use only one, the other feeding port will help you control the air intake

Make sure that when installing the screens they enter through their guides, you should not force them when entering.



!WARNING!

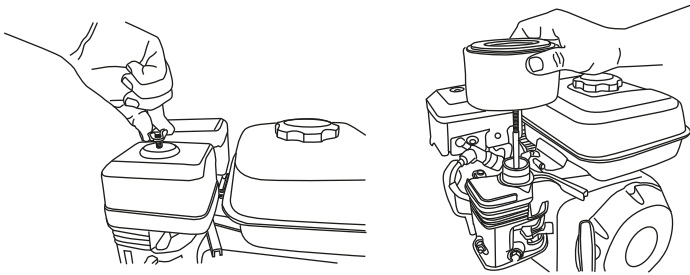
- Start the engine with the belts slack and never remove the protection.
- Never run your engine more than 15° of incline or the engine will drift.
- When grinding dry material, use the feed port opposite to where the engine is to prevent it from suffocating with material and causing an accident.

5. MAINTENANCE

This equipment is easy to use and easy to maintain. If you follow the steps that we mention in this manual, the useful life of your equipment will be very long.

5.1 GUIDE FOR DAILY MAINTENANCE

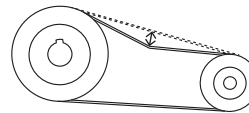
1. You should not start maintenance until you are sure that the engine has been stopped or turned off.
2. Check that all screws and nuts are tight.
3. Clean the engine air filter.
4. Grease the bearings after each working day.



NOTE: We have repair and maintenance service for SWISSMEX equipment. Request it if you don't know how to do it, otherwise go to a professional.

NOTE: To ensure a better performance use SWISSMEX-RAPID original spare parts.

5. Verify the belts are in good condition and they are tensed. If they are well taut, when applying force should have a 1 cm deviation from each other.



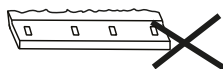
If you need to adjust the belt tensioner, you must loosen the tensioner stop.

6. Remove any plant debris or sap from inside the grinding chamber.
7. Check that both tires have proper air pressure.

!WARNING!

Remove the spark plug wire before any intervention on the engine, to avoid accidents. When repairing the grinding chamber, block the rotor with a log.

8. When the time comes for the blades must be sharpened, you must remove them and take them to a grinding machine to sharpen, taking care that each blade is brushed in the same amount so the rotor does not lose balance once sharpened, you must install them again and adjust the counter blade which should have a gap of 3.2 mm between the blade and the counter blade. The mill must be repaired by an expert mechanic when it presents a major fault.



NOTE: Remember that using the equipment with dull blades will reduce performance and will cause excessive vibration.


9. The distance between the blade and the counter blade should be 3.2 mm or 1/8" if you do not have this measure, bring the counter blade closer.

5.2 MAJOR MAINTENANCE

- The equipment must be repaired by an expert mechanic when it presents a major fault.

5.3 MAINTENANCE SCHEDULE

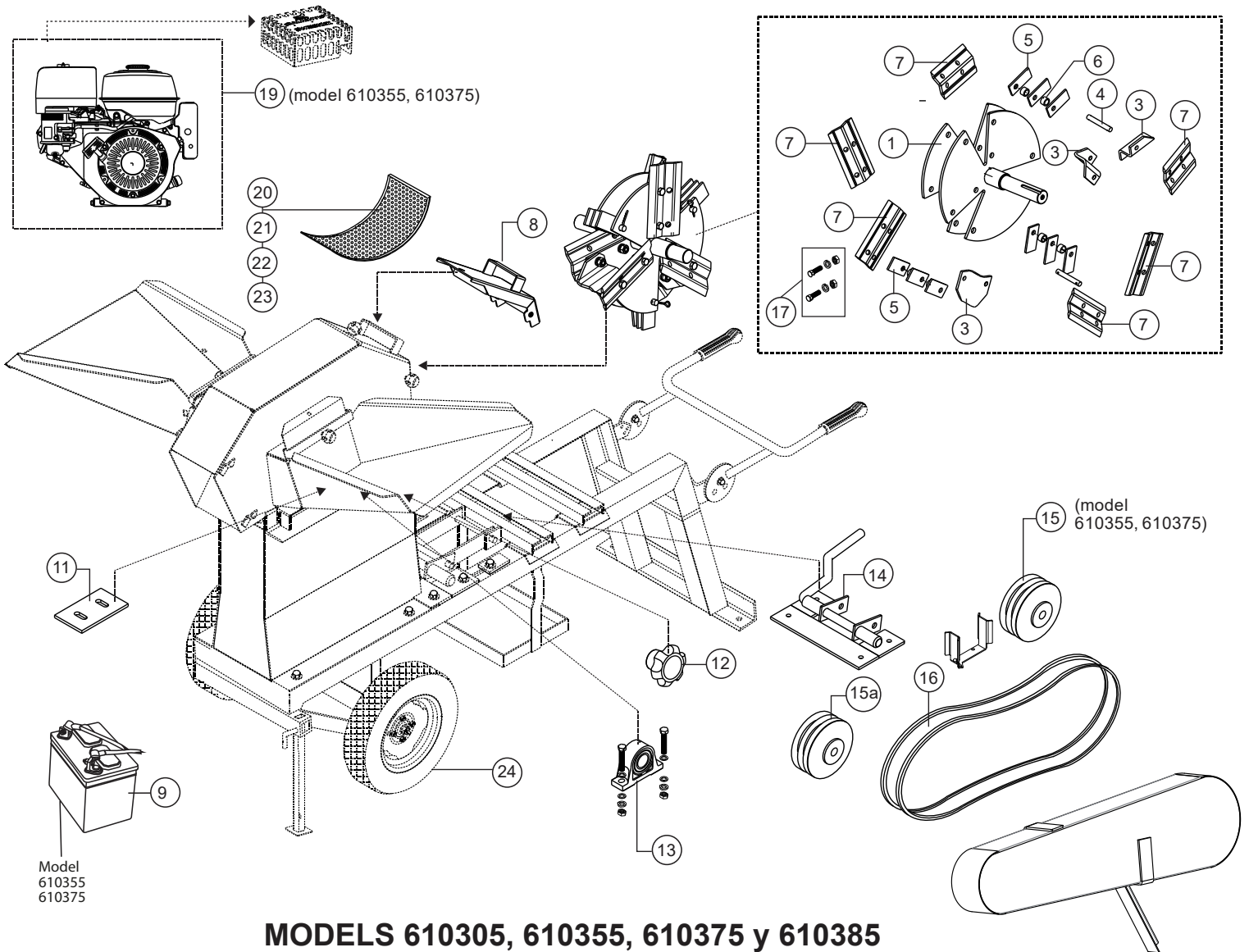
MAINTENANCE SCHEDULE	ACTIVITY
After first 25 hours.	Change the engine oil.
Daily.	Clean the air filter.
Each 100 hours of use.	<ul style="list-style-type: none"> - Replace the air filter. - Change the engine oil. - Replace the belts. - Check the tires.
Each 200 hours of use.	<ul style="list-style-type: none"> - Check the spark plug, if it is charred, clean it or replace it. - Replace the gasoline filter
Each 500 hours of use.	<ul style="list-style-type: none"> - Replace the spark plug.
Every year or before storing the mill.	<ul style="list-style-type: none"> - Change the engine oil.

 **NOTE:** If the battery discharges, take it to be charged at a specialized workshop.

6. TROUBLE SHOOTING

PROBLEM	CAUSE	SOLUTION
The engine does not start.	<ol style="list-style-type: none"> 1.- The belts are taut. 2.- The battery is NOT charging. 3.- The air filter is clogged. 4.- The engine does not have the proper oil level and the sensor shuts down the engine for safety. 5.- The grinder is NOT well anchored to a level floor and the oil is loaded to one side and the sensor detects lack of oil. 6.- The tank does not have fuel. 	<ol style="list-style-type: none"> 1.- Slack the belts so that the engine can start freely. 2.- Charge the battery. 3.- Wash or replace the air filter. 4.- Load oil until obtaining the proper level, guiding it on the dip stick. 5.- Fix the mill horizontally to the floor. 6.- Load fresh and clean gasoline in the tank.
The engine does not start even though the gas tank is full.	The fuel tap from the tank to the engine is closed.	Open the fuel tap under the tank.
The engine starts, but it dies in a few seconds.	The choke is not open.	Open the choke by moving the lever.
The mill shuts down after starting to feed material.	The engine is not accelerated to its maximum power	Speed up the engine to full power.
The belts slip while working with the mill.	The belts do not have the correct tension	Adjust the belts using the tensioner bolt or replace when necessary.
It does not cut material correctly.	The blades are dull.	Replace the blades.

7. SPARE PARTS



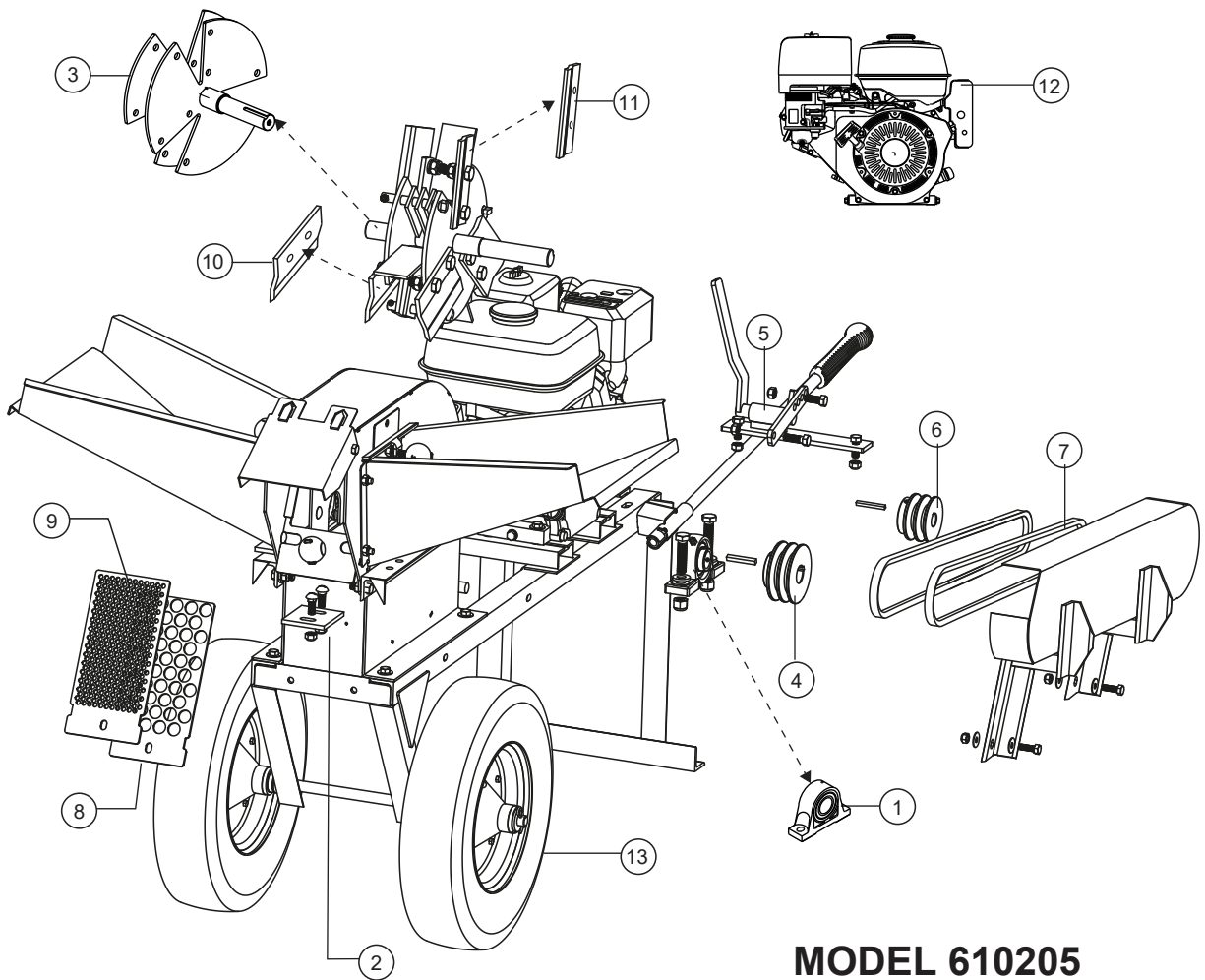
MODELS 610305, 610355, 610375 y 610385

A Wear parts and consumables always available				
No.	Code	Description	Quantity per unit	Qty. per package
5	E2000610345	Hammer	9	1
7	E2000610341	Angled blade	6	1
11	E2000610346	Blade counterpart	2	1
16	E2888610302	Belt B-65	2	1
17	E2888610004	Screw kit for blade	1	1

NOTE: Due to interest in technological progress, we reserve the right to make technical changes or modifications without prior notice.

NOTE: Model 610305 does not include motor or battery

B Medium-wear Parts available at our discretion				
No.	Code	Description	Quantity per unit	Qty. per package
1	E2000610337	Extractor	1	1
3	E2000610340	Disc spacer	3	1
4	E2000610344	Hammer holder pin	3	1
6	E2000610343	Spacer bushing	6	6
8	E2000610326	cover cap	1	1
9	E3888940002	Battery	1	1
12	E2000610388	Cover nut	1	1
13	E2888647137	Rowlock 1 1/4"	1	1
14	E2000610316	Engine tensioner	1	1
15	E2888610300	Pulley 1"	1	1
15a	E2888610303	Pulley 1 1/4"	1	1
19	710005	Engine 188 F-E13 HP (for models 610350 & 610370)	1	1
20	E2888610304	1/8" screen	1	1
21	E2888610305	1" screen	1	1
22	E2888610240	1/2" screen	1	1
23	E2888610252	1/4" screen	1	1
24	E4888623004	Tire	2	1



MODEL 610205

A Wear parts and consumables always available.				
No.	Código	Description	Quantity per unit	Qty. per package
2	E2000610347	Counterpart	2	1
3	E2000610372	Rotor	1	1
7	E2888612002	Belt	2	1
10	E2000610370	Right blade	3	1
11	E2000610349	Left blade	3	1

B Medium-wear Parts available at our				
No.	Código	Description	Quantity per unit	Qty. per package
1	E2888610555	Rowlock	2	1
4	E2888610556	Iron pulley 2A87X1"	1	1
5	E2000610348	Tensor	1	1
6	E2888610557	Iron pulley 2A68X3/4"	1	1
8	E2000610318	Screen 3/4"	1	1
9	E2000610322	Screen 1/4"	1	1
12	710015	Engine FC170F/6.5 HP	1	1
13	E4888623004	Tire	2	1

NOTE: Due to interest in technological progress, we reserve the right to make technical changes or modifications without prior notice.

8. STORAGE

Always leave your equipment in a covered place so that the sun and rain do not damage it. After each workday make sure that: the grinding chamber is clean, the belts are loosened, the bearings are lubricated, the gasoline from the tank has been removed and stored in an appropriate area for fuels. This will extend the useful life of the equipment.

NOTE: We recommend that you close the fuel tap with the engine running, this way it will consume all of it and ensure that the engine is not stored with gasoline.

9. WARRANTY

SWISSMEX®

Any claim made under this warranty must adhere to the Warranty Policy described below:

The warranty will be granted by SWISSMEX RAPID SA DE CV, free of charge, when the parts and components present manufacturing or assembly defects and after conclusive analysis in the plant (Lagos de Moreno, Jalisco). The warranty consists of replacing damaged parts with new ones or changing the damaged equipment for a new one once the type of damage to the equipment has been verified and evaluated. It does not include labor or transportation.

The warranty of your equipment can be PREMIUM, MEDIUM, or BASIC. It is indicated on the cover of your manual. You can also consult it on the website and in the product catalogues.

WARRANTY TERM:

Premium Line = 12 months

Medium Line = 6 months

Basic Line = 3 months

The warranty does not apply when:

- Causes are not attributable to manufacturing defects or material defects.
- The equipment has been misused or has been given a use other than that established in the standards and recommendations of the user manual. and/or for which it was designed.
- Damage caused by natural disasters (earthquakes, floods, fires, electrical storms).
- When the product has received accidental or intentional hit or has been exposed to elements harmful as water, acids, fire, weather or any other similar.
- For damages suffered during transportation, the merchandise travels at the client's risk.
- If the serial number has been removed or erased.
- If original Swissmex spare parts are not used or manufacturer parts in the case of commercialized products.
- Incorrect maintenance, carried out by unqualified personnel or not authorized by Swissmex.
- If the equipment suffered modifications or alterations in its original design.
- Due to abuse, negligence, accident or for using a tractor with a power different from that indicated in the technical data sheet.
- Incomplete filling out of the warranty.

Swissmex is not responsible for theft, accidents or fatalities caused by the equipment.

Warranty does not cover:

- Consumables and natural wear parts
- Electric parts
- Spare parts in general
- Shipping, transportation, delivery, or packaging expenses.

The warranty must be processed by the client who sold the implement or the end user by email:
info1@swissmex.com.mx

For products imported and marketed by Swissmex Rapid SA de CV, the warranty term will be established by the equipment manufacturer. Check in the manual what term applies to your equipment.

IT IS MANDATORY FOR THE CLIENT TO FILL IN THE FOLLOWING INFORMATION AT THE TIME OF SALE

- Client/username: _____
- Model: _____
- Serial number: _____
- Acquisition date: _____
- Place of acquisition: _____

Client's signature
& stamp



Contáctanos:
www.swissmex.com
info1@swissmex.com.mx
Calle Swissmex No. 500
Lagos de Moreno Jal. México
Tels: 474 741 22 28 y 741 22 07
800 849 19 92